



EYESEE Cloud Release

Version 1.15

/09/2023

The made changes concern the following features:

Functional improvements

- [Add Dashboard menu](#)
- [Add customer report](#)
- [Performed mission: The details window for a location is displayed in a larger format on the page for a better view of the photos](#)
- [Mission: Icons repositioned for better visibility](#)
- [Performed mission: 'Replace expected code with read code' button](#)
- [Viewing a mission: List of executions and acquisition details on the mission page](#)
- [Ability to download scan errors only](#)
- [Added confirmation messages for creation and modification + modal to confirm deletion](#)
- [Reset password, login, maintenance and forgotten password pages displayed according to browser language](#)

Corrective actions

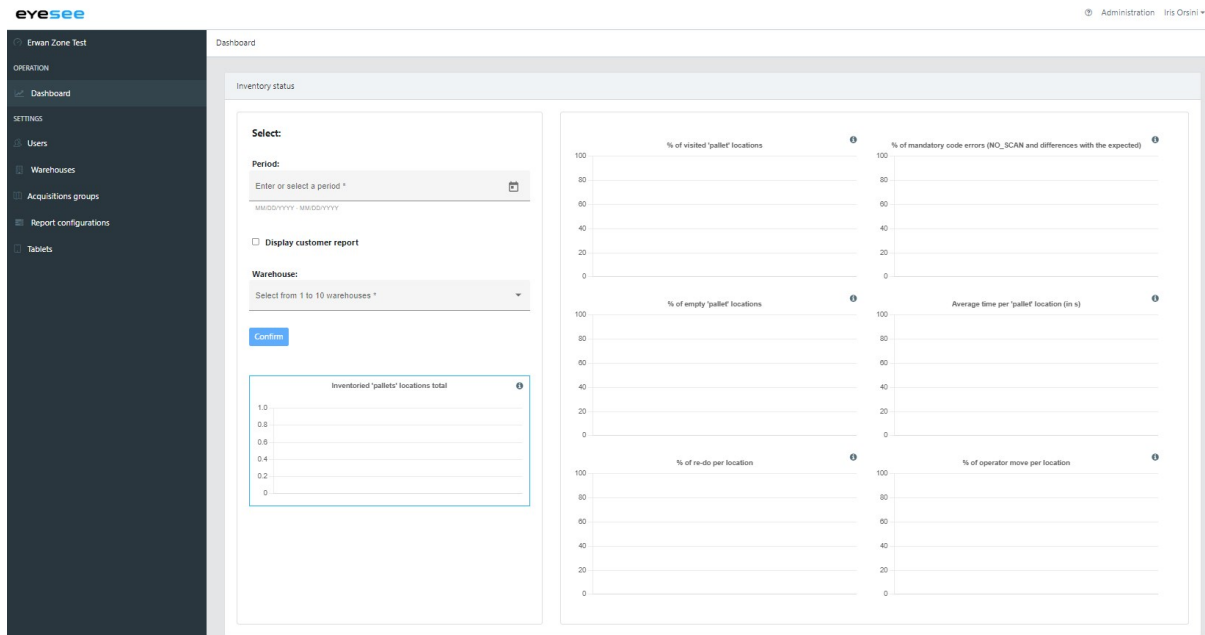
- [Scanner acquisition: if this is set to 'not mandatory', automatic validation of NO SCANS is ticked off and disabled](#)
- [List of missions: Tooltip on the name](#)
- [Error message modified when requesting password reset without having a confirmed account](#)
- [Entire Cloud: 'task' replaced by 'mission](#)
- [Link added to home page](#)
- [Creation of faces: changing the number of levels could lead to a configuration error](#)
- [Editing faces: the icon for deleting levels was still displayed](#)
- [Viewing faces: the tooltip text for location names returned to the line with a space, and deleted spaces when there was more than one](#)

- Other minor corrective actions carried out

Functional improvements

Add Dashboard menu

When this page is displayed, the graphs appear empty. As soon as you select a date and validate the form, each graph will be filled in automatically.



More details:

Selection :

A period is required and the choice of at least 1 warehouse.

It is possible to delete selections.

- Period :

Date or period to be typed in or chosen from the calendar. The minimum date is: 1/1/2022. Maximum date: same day.

- Show customer report:

Checking this option displays the percentage of 'pallet' locations visited for an entire depot. This page groups together the graphics of the depot, the zones and the faces it contains.

- Warehouses :

Up to 10 depots can be selected.

Selecting I will dynamically display the zones and activated faces it contains in two new drop-down menus.

- Zones:

It is possible to select several zones (IO maximum), or a group of IO to display them quickly. If a group is selected, all the zones are greyed out.

Selecting I zone dynamically displays the activated faces it contains.

- Faces :

It is possible to select several faces (IO maximum), or a group of IO to display them quickly. If a group is selected, all the faces are greyed out.

By clicking on 'Validate', the graphs are filled in and the 'Download PDF' button appears if there is data.

Charts:

A Percentages / Numbers slider appears once the form has been submitted, allowing you to display the graphs with the 2 data formats.

By default, the chart titles are in percentages. They are dynamic according to the 'Percentages / Numbers' choice.

An explanatory tooltip, also dynamic depending on the choice, is located next to the title of each graph..

Download PDF button :

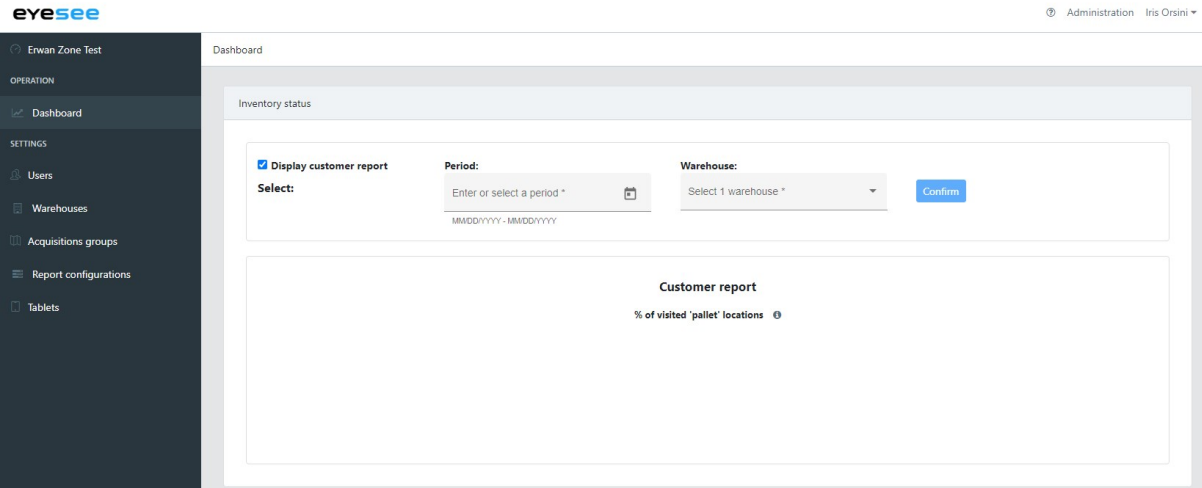
Allows you to download the 6 graphs displayed in PDF format, as well as the selected period and the linear graph of sums.

It is only displayed once the selection has been validated and if there is data.

If the whole selection has no data, it is not displayed.

Add customer report

Selecting a date and validating the form displays, for the selected date range, the percentage of 'pallet' locations visited for the chosen depot, as well as each activated zone and face of this depot..



More details:

Selection :

A period is required and the choice of a warehouse.

It is possible to delete selections.

- Period:

Date or period to be typed in or chosen from the calendar. The minimum date is 1/1/2022. Maximum date: same day.

- Warehouse:

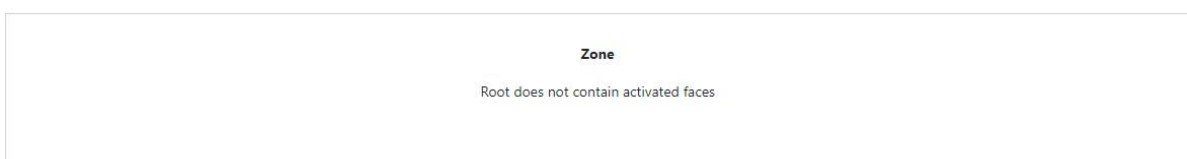
You can select a warehouse.

Graphs :

Several graphs will be displayed, representing the progress of the inventory for :

- The selected warehouse
- Each zone containing activated faces
- Below the graph for each zone, the graphs for all activated faces

If a zone contains no activated faces, this box is displayed:



PDF:

- Page I:

The first page contains a summary of various data:

- Selected period
- PDF export date
- The user who generated the report
- The company
- The selected depot
- The list of faces inspected in this depot
- A summary of the executions containing :

The number and percentage of 'pallet' locations inventoried, an estimate of the number of 'pallet' locations inventoried at this rate, the number of inventories per 'pallet' location per year at this rate.

The graph for the selected depot is also displayed.

- Other pages :

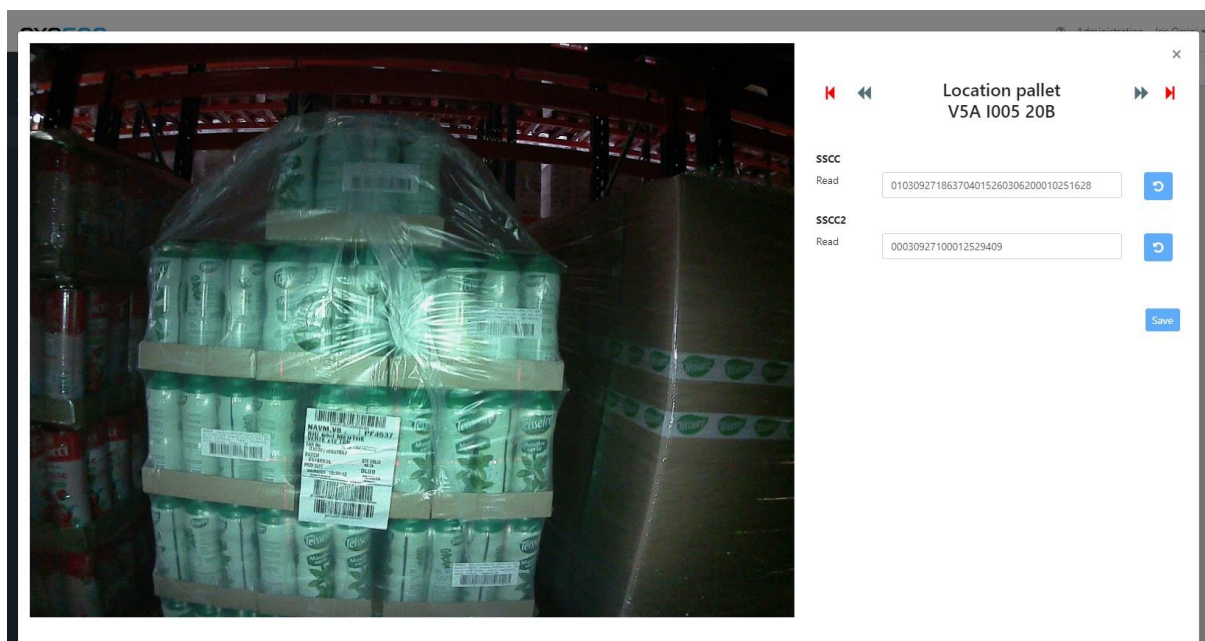
One page per zone:

- If there is only one graph of faces, it appears in the middle.
- Otherwise, a maximum of 6 face charts per page. If there are more than 6 face graphics (i.e. more than 60 faces in the zone), a new page is created for these graphics only.

If there are one or more zones that do not contain activated faces, a sentence containing the list of these zones is displayed on the first page.

Performed mission: The details window for a location is displayed in a larger format on the page for a better view of the photos

The modal that was displayed when you clicked on a location in a completed mission did not take up the full size of the screen. It has been enlarged to 98% of the width of the window for maximum visibility of the photos.



Mission: Icons repositioned for better visibility

The photo and scan icons were not necessarily aligned, and on small locations they even overlapped.

This has been corrected: the scan and red cross icons are now aligned with the photo icon (vertically or horizontally depending on the height of the location). If there is no scan, the photo icon appears in the middle.

The ratio has also been changed in the mission menu only: this allows the preview of the face to be seen slightly larger.



Performed mission: 'Replace expected code with read code' button

A button has been added to replace the value read by the expected value and save the modification. When the change is saved, a message appears:

A screenshot of the 'Location pallet J13C' interface. At the top, there are navigation arrows (back, forward) and the title 'Location pallet J13C'. Below this, the 'SSCC' field is shown with 'Expected' value '233607800815429886' and 'Read' value '233607800815429886'. A 'Save' button is visible on the right. Below the 'Read' field, a message states 'The new value 233607800815429886 have been saved'. A 'Save' button is also present at the bottom right.

For new executions from this release, the original value scanned by the drone has been added. This value cannot be modified.

The screenshot shows a user interface for configuring a mission. At the top, there are navigation icons: a red 'H' with a left arrow, a double left arrow, a double right arrow, and a red 'H' with a right arrow. A close button 'x' is in the top right. The main title is 'Location pallet V5A I007 20C'. Below this, the label 'SSCC' is followed by 'Read' and a text input field containing '00030927100008946807'. A blue button with a refresh icon is to the right of the input field. Below the input field, the text 'Original value: 00030927100008946807' is displayed. At the bottom right, there is a blue 'Save' button.

Viewing a mission: List of executions and acquisition details on the mission page

The pages for selecting a mission execution and viewing acquisitions have been integrated into the mission view page.

This page now contains :

- 'List of mission executions' table, which lets you select the execution to be displayed
- 'Scans' and 'Points of interest' tables, which list the acquisitions retrieved by the drone
- 'Locations scanned by the mission with expected values' table, which lists the locations to be scanned by the mission that contain expected values

OPERATION

Missions

SETTINGS

Users

Map

Preferences

View mission VSA_Ticket_EYES_105.dmis

Created by SYSTEM, Last modified by Iris Orsini on September 01, 2023

Face: VSA I

Expected values: No

Type of path: Vertical path

Mission type: Between two columns

Acquisitions: SSCC, Photo 50%, Interest Point

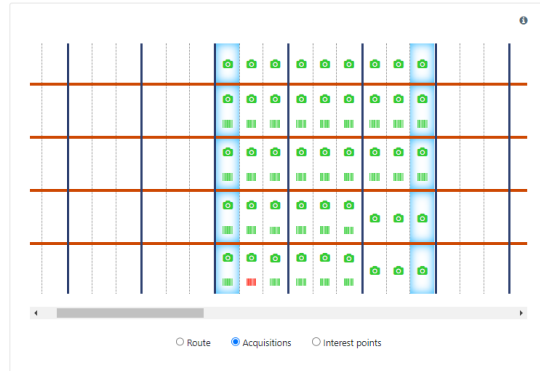
State: Performed mission

Mission performance date: November 30, 1899 at 12:09 AM

Allow the download: Yes No

Allow the upload: Yes No

Expected values:
CSV file corresponding to the expected values format



List of mission performances

<input type="checkbox"/>	November 30, 1899 at 12:09 AM	November 30, 1899 at 12:09 AM	August 17, 2023 at 03:38 PM	<input checked="" type="radio"/>
<input type="checkbox"/>	November 30, 1899 at 12:09 AM	November 30, 1899 at 12:09 AM	September 01, 2023 at 09:41 AM	<input type="radio"/>
<input type="checkbox"/>	November 30, 1899 at 12:09 AM	November 30, 1899 at 12:09 AM	September 01, 2023 at 09:42 AM	<input type="radio"/>
<input type="checkbox"/>	November 30, 1899 at 12:09 AM	November 30, 1899 at 12:09 AM	September 01, 2023 at 09:43 AM	<input type="radio"/>
<input type="checkbox"/>	November 30, 1899 at 12:09 AM	November 30, 1899 at 12:09 AM	September 01, 2023 at 09:53 AM	<input type="radio"/>
<input type="checkbox"/>	November 23, 2019 at 02:46 AM	November 23, 2019 at 03:16 AM	September 01, 2023 at 10:12 AM	<input type="radio"/>
<input type="checkbox"/>	November 23, 2019 at 02:46 AM	November 23, 2019 at 03:16 AM	September 01, 2023 at 10:12 AM	<input type="radio"/>
<input type="checkbox"/>	November 23, 2019 at 02:46 AM	November 23, 2019 at 03:16 AM	September 01, 2023 at 10:12 AM	<input type="radio"/>
<input type="checkbox"/>	November 23, 2019 at 02:46 AM	November 23, 2019 at 03:16 AM	September 01, 2023 at 10:12 AM	<input type="radio"/>
<input type="checkbox"/>	November 23, 2019 at 02:46 AM	November 23, 2019 at 03:16 AM	September 01, 2023 at 10:12 AM	<input type="radio"/>

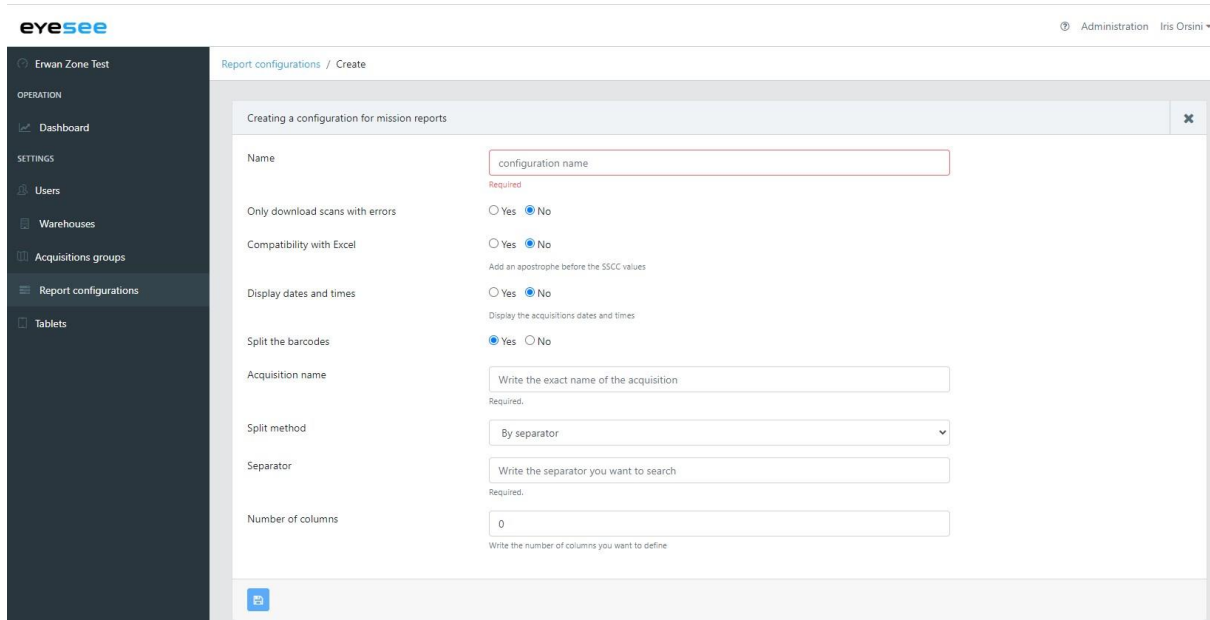
Scans

VSA I007 20B	V 103092710003107115200110200010290301
VSA I007 10B	NO_SCAN
VSA I007 10C	009988776655
VSA I007 20C	00030927100008946807
VSA I007 30C	00030927100012279250
VSA I007 40C	00030927100012287880
VSA I007 50C	EMPTY
VSA I009 50A	EMPTY
VSA I009 40A	00030927100012321034

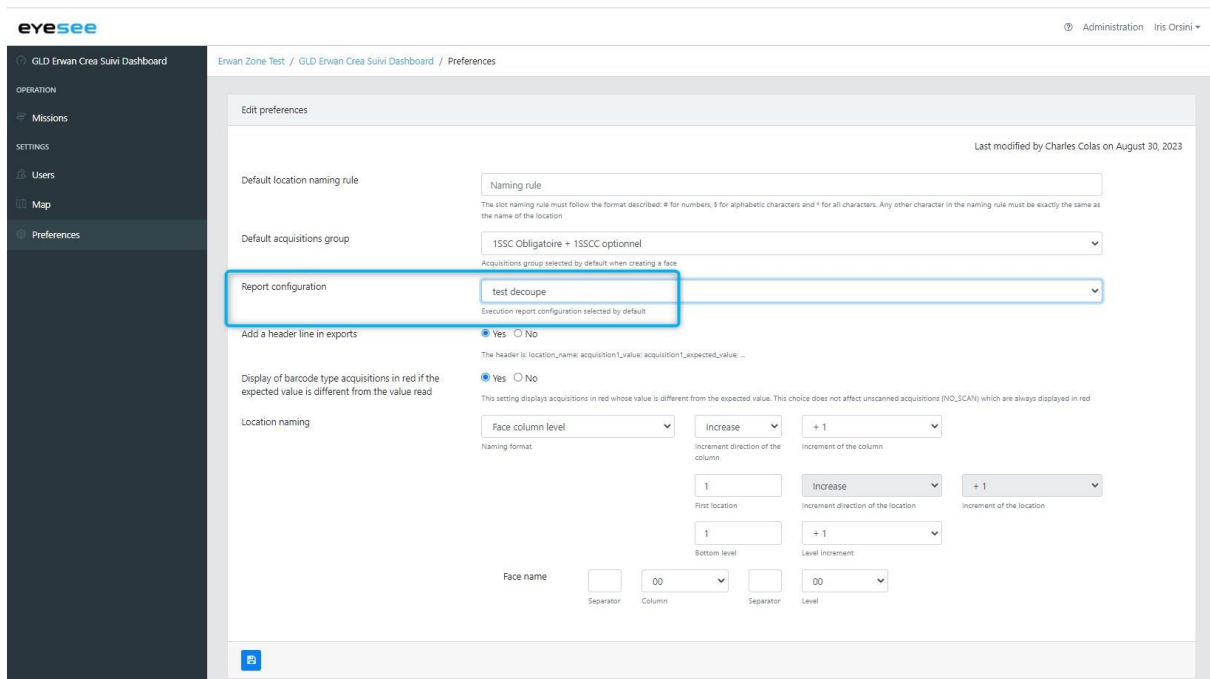
Interest points

location_name	Interest Point_value

A new menu has been added to the CSV reports of executed missions: "Report configurations", which lets you manage all the configurations of execution reports.

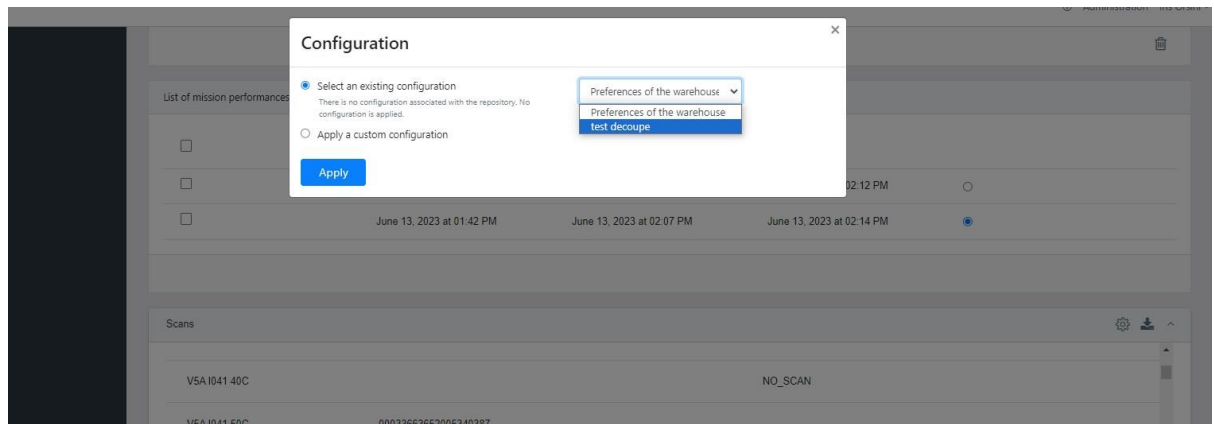


In the left-hand **Preferences** menu, it is possible to choose the report configuration by default:



For a given mission, you can :

- Choose an existing configuration (those available are those that are compatible with the mission. Compatibility depends on the split acquisition),
- Inherit the configuration chosen for the warehouse
- Apply a configuration to the mission and, depending on the user's rights, save it to make it available to all depots.



Ability to download scan errors only

It is now possible to choose to download only the errors of a mission that has been carried out. (An error is a NO_SCAN or a value read that is different from the expected value).

This change has been integrated into the mission report configurations.

Added confirmation messages for creation and modification + modal to confirm deletion

Confirmation messages for creation, modification and deletion have been added, as well as modals requesting confirmation of deletion (which were already in place in some cases):

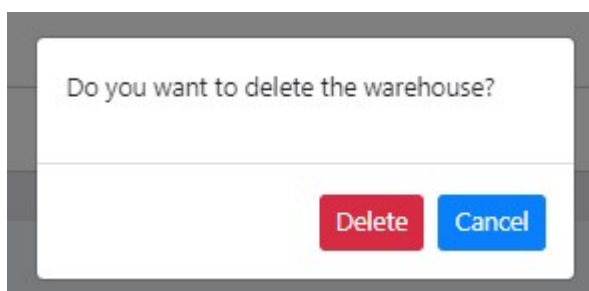
When creating :

Creation successfully completed

When modifying:

Update successfully completed

When deleting:



Deletion successfully completed

Reset password, login, maintenance and forgotten password pages displayed according to browser language

The login, forgot password, reset password and maintenance pages could appear in French. This has been corrected using the browser's language detection: if it is in French, the pages mentioned will be displayed in French, for all other languages they will be displayed in English.

[Corrective actions](#)

Scanner acquisition: if this is set to 'not mandatory', automatic validation of NO_SCANS is ticked off and disabled

Creating a non-mandatory scanner acquisition with auto validation of codes not found set to 'Yes' could lead to an error; this has been corrected.

If a scanner acquisition is configured as 'non-mandatory', then auto validation of barcodes not found changes to 'No' by default and can no longer be modified.

Edit acquisition

Created by Erwan Lebeau, L2

Name
Required

Type

Required Yes No

Search type

Filter
Required. Expected barcode format(s)


Definition of empty location %
Required. Numeric value expected. Minimum percentage of the location for it to be considered empty

Automatic validation of empty locations Yes No
Are empty locations automatically validated?

Automatic validation of barcodes not found Yes No
Are barcodes not found automatically validated?

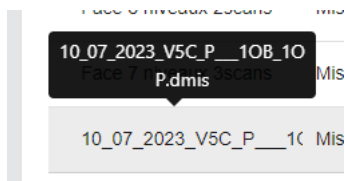
Unique values Yes No
Do barcode values have to be unique?

Multiple reading Yes No
Does the first barcode read validate the acquisition?



List of missions: Tooltip on the name

In the list of missions, mission names without spaces were cut off and it was not possible to see the full name unless you clicked on it. This has been corrected with the addition of a tooltip.



Error message modified when requesting password reset without having a confirmed account

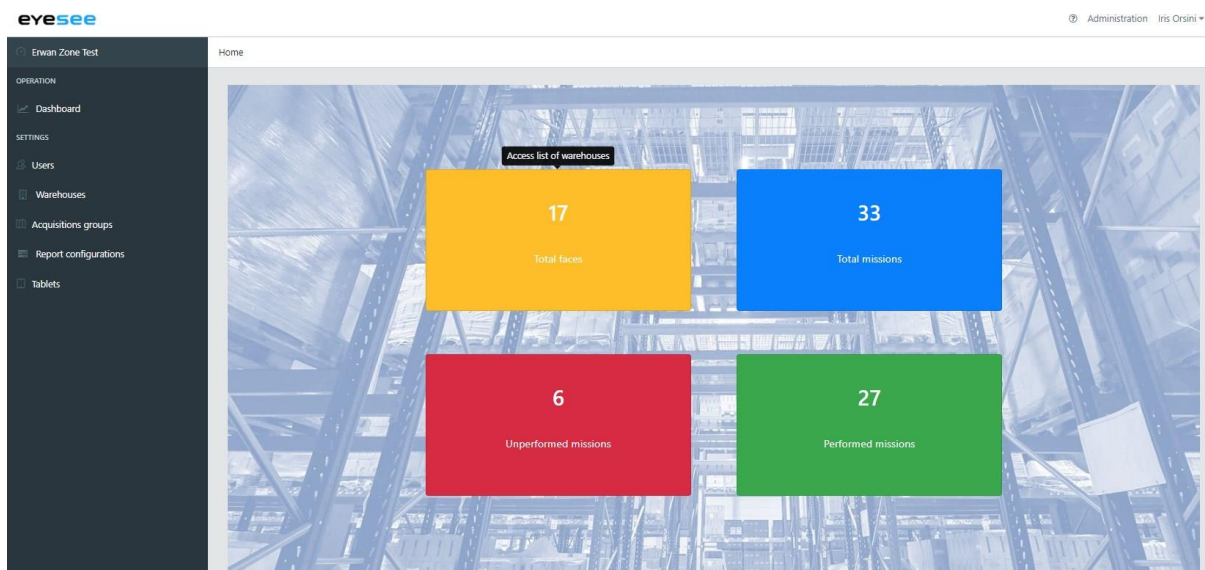
Until now, the error message displayed was: 'Your password cannot be reset'. It is now more detailed.

Entire Cloud: 'task' replaced by 'mission'

In English, the word 'task' has been replaced by 'mission' in the Cloud.

Link added to home page

On the home page, the 4 'maps' were not interactive. Links have been added, redirecting users to the list of depots.

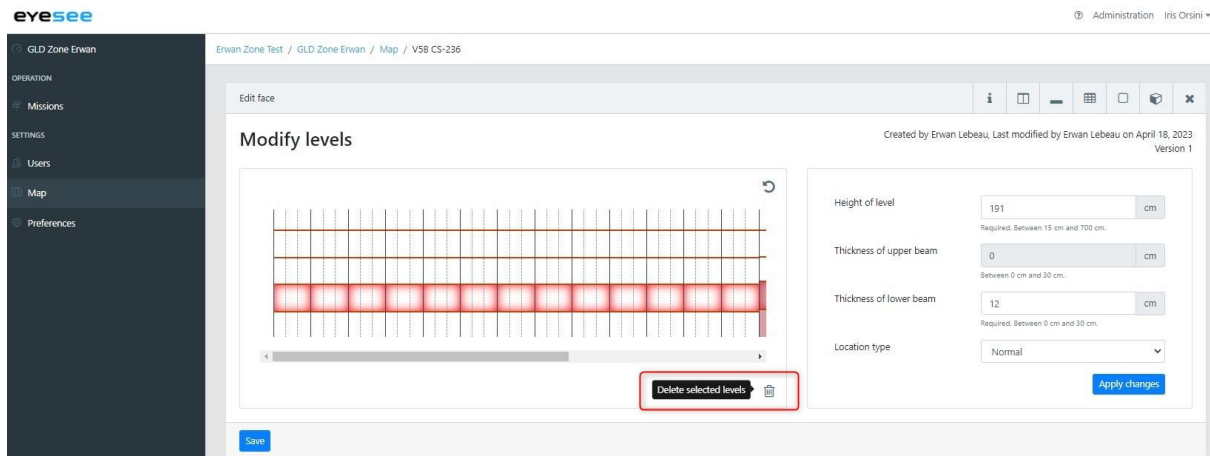


Creation of faces: changing the number of levels could lead to a configuration error configuration

By reducing the number of levels when creating a face, the modification was not always taken into account. This has now been corrected.

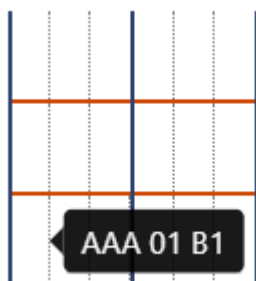
Editing faces: the icon for deleting levels was still displayed

The level deletion icon was still displayed even when changing menus. This has now been corrected.



Viewing faces: the tooltip text for location names returned to the line with a space, and deleted spaces when there was more than one

The names of the face locations are now displayed on a single line:



Spaces are now displayed:

